



The Charolais Pavilion,
Avenue M,
Stoneleigh Park, Kenilworth,
Warwickshire, CV8 2RG
t: 024 76 697731
f: 024 76 697776
www.rugbyfarmersmart.com
Holding No. 43-139-8013

Office Hours: Monday to Friday – 9.00am to 5.00pm
Opening Time: Gates open at 5.30am until further notice

Market Reports For Monday 9th December 2019

Market At A Glance



Monday 9th December
Prime Steers to 185p/kg & £1115
Prime Heifers to 234p/kg & £1337
Prime Bulls to 190p/kg & £1207
OTM Cattle to 135p/kg & £1450
Prime Lamb SQQ 201.9p/kg (2275)
Prime Lambs to 246p/kg & £120
Store Lambs to £82 (620)
Calves to £298 (93)
Ewes to £125 (818 Avg £74)

**Monday 16th December
Sale of Store Cattle**

!We will be closed on Monday 23rd December!

Catalogues & Entry Forms available by post, email or on the website
www.rugbyfarmersmart.com ~ admin@rugbyfarmersmart.com

CATTLE: 166 Forward

Within the Prime Stock ring approx 80 head of cattle were sold, all selling far greater than vendors expectations. Buyers from over 150 miles travelled in order to purchase the cattle presented for Auction. Many more cattle can now be sold weekly as we are now supplying many new abattoirs from all over the UK. This week two new buyers were present.

55 Head of Clean cattle were sold

Heifers - Top price per kilo was 234p and realised £1266 consigned by Messers Page Bros of Lodge Farm Yelvertoft Road, purchased by Joseph Morris Butchers.

Steers - Top price per kilo was 185p and realised £1100 consigned by Messers S Webster High House Farm.

18 Head of Cast Cows & Stock Bulls Forward

Top price per kilo was for a Lim cow which realised 134p and £1064 consigned by A Davenport & Sons Lawford Farms. Stock Bulls to £1451 from Mr Lea

Leading Grossing Cows

£1055 £1005 £988 £933 WR Eales & Son, £981 CH Evans & Son, £840 JV&SM Lea & Sons, £820 B Nichols

Stock Bulls

115p & £1451 JV&SM Lea Sons, 108p & £1047 RW Cross & Ptnrs

Many more Prime Cattle and Cast cows can be sold to vendors advantage. There is no classification of beef animal we cannot sell and market to the most appropriate Abattoir UK wide.

Please Contact Andy Armstrong for an onfarm visit to value cattle. We are currently on a drive to make Rugby to Cattle Prime stock centre of the Midlands. "Help us" to "Help you"

Please can vendors ensure cattle are in the Market before 11am ready for sale.

Auctioneer: Andrew Armstrong

"We would like to wish all of our customers and the Rugby Farmers Mart team a Merry Christmas and a Happy and prosperous New Year.

To thank you all for your custom during the past 12 months we will provide a complimentary Christmas buffet on Monday, 16 December. This will be served in the cafe at 2pm.

Market regulars Robert Leach and Gary Hutchinson have very kindly provided some of the meat.

David, Cindy and Bradley."

STEERS & BULLS:			
Top prices per head			
Blonde (Bull)	635kg	£1207	T Line
Limousin x	660kg	£1115	E T Jackson & Sons
Simmental	595kg	£1101	S Webster
Blonde (Bull)	597kg	£1075	T Line
Simmental	630kg	£1071	B Nichols
Top prices per kilo			
Blonde (Bull)	635kg	190ppk	T Line
Blonde (Bull)	571kg	185ppk	T Line
Simmental	595kg	185ppk	S Webster
Blonde (Bull)	597kg	180ppk	T Line
Simmental	630kg	170ppk	B Nichols

HEIFERS:			
Top prices per Head			
Limousin x	693kg	£1337	DTP & PA Walters
Limousin x	650kg	£1333	DTP & PA Walters
Limousin x	586kg	£1283	M A Lee
Limousin x	541kg	£1266	Page Bros
Limousin x	540kg	£1210	Page Bros

Top prices per Kilo			
Limousin x	541kg	234ppk	Page Bros
Limousin x	510kg	230ppk	Page Bros
Limousin x	504kg	226ppk	Page Bros
Limousin x	510kg	226ppk	M W Emery
Limousin x	540kg	224ppk	Page Bros

**Please could all vendors book in stock, either by a quick call,
text or email Thank You!**

Office: 02476697731

Email: admin@rugbyfarmersmart.com

Tom: 07774723758

Just a quick note to thank you all for kind thoughts and interest in my ongoing illness. Tests are still on-going and hopefully I can update you in the near future. I look forward to seeing you in the new year. Wishing you a Happy Christmas and a Healthy 2020.

Craig Thompson

CALVES: 93 Forward

A mixed entry of calves today with some real quality among them! Best end continentals a pleasure to sell, with top price Bulls to £298 for Charolais x from GE Pountney. Blue Bulls to £295 from Phil Dyson. Best Heifers to £252 from Stuart Cartwright, with others to £240. Rearing Blue Bulls trading between the £150 and £200 mark, with no real rearing Heifers forward.

Natives a mixed trade. Best end Angus Bulls to £270 from TS & A Adams, with others to £260. Best Heifers to £186 from the same home. Rearing natives selling between £100 and £150 for Bulls and £80 to £120 for Heifers.

Dairy Bred Bulls looking a real trade, with best end £70-£80, middle of the road sorts £60 and very little sold under £40, even the smallest processing types.

NEXT SALE

30th December.

Purchaser of the Top Price Calves in November Kindly Sponsored by



Top Price Continental

£292 Limousin x Bull from the Tittertons brought by David Jeffries
Receives a bag of Shine Twice a Day Milk powder

Top Price Native

£248 Angus x from T Adams brought by David Jeffries
Receives A 5kg Crystalalyx Easy breather

Auctioneer: Martin Lloyd

SHEEP:3713

Prime Lambs: 2275 Forward SQQ 201.9p/kg

A testing day with us having to revert to selling through the ring system, to cater for earlier problems caused by a power surge. A fast trade and in the top few of the Country for the day bolstered by a new buyer in the aisles and a returning seasonal local consumer to bring the tally of buyers to 10. Trade frankly flying and in complete contrast to the actions of the deadweight who dropped the price on the same day! An SQQ of 201.9p/kg representing a yarding that despite perhaps 10% very good lambs would on the whole be about as poor a yarding as we have had for a while. That said those with proper finish competed for fiercely. In the Euro section today a top of 246p/kg for 45kg from Page Bros with Beltex whilst John and Chris Rutter, Shipston on Stour took 239p/kg for 35.5kg little blocks of meat ahead of R Richins, Oxford at 234p/kg at 40kg and Messrs Sammons, also of Shipston on Stour 231p/kg at 39kg. In the heavies a top of 233p/kg at 46kg for Messrs Claridge, Winslow whilst Blue Texels from SJ Timms saw a whopping 226p/kg at 53kg whilst BJ & IS Wain 46kg to 217p/kg. In the lump Export weight lambs topping out at £110.50 for 45kg and £99 for 44kg from Page Bros, Yelvertoft whilst 44.5kg from G L Woodward, Banbury to £97 and 43.5kg from BJ & IS Wain £95.50 for a pen full. Overall heavies a fine trade today selling to a top of a £120 for Steve Timms, Coventry with Blue Texels at 53kg whilst 62kg from H L Goode & Son, Hockley Heath £115 and HW & AJ Eadon & Son 60kg to £110 ahead of Culworth Grounds and MFH Farming at £110. Trade today hot despite quality being low. Vendors are asked to acknowledge the massive premium on offer for best fed and bred lambs. Also today belly clipping becoming ever important with two accounts only allowed by Pre-Mortam Vet practice, to buy belly clipped lambs. Please make sure lambs are clean and clipped. Do you want the food on your families plate contaminated by what is stuck to a lambs belly???

Auctioneer: Tom Wrench

Prime Lambs : under 45.5kg SQQ p/kg			
Per Kilo			
Texel x	43.00kg	246ppk	Page Bros
Charollais x	35.50kg	239ppk	J Rutter & Son
Beltex x	40.00kg	234ppk	R Richins
Texel x	32.50kg	234ppk	L Kerby
Beltex x	39.00kg	231ppk	T W Sammons

Per HEAD			
Texel x	45.00kg	£110.50	Page Bros
Texel x	44.00kg	£99.00	Page Bros
Texel x	44.50kg	£97.00	G L Woodard
Texel x	43.50kg	£95.50	BJ & IS Wain
Texel x	43.00kg	£95.00	Townshend Partners

Prime Lambs: OVER 45.5kg			
Per kilo			
Beltex x	46.00kg	233ppk	AEJ & FJ Claridge
Blue Texel x	53.00kg	226ppk	SJ Timms
Charollais x	46.00kg	217ppk	BJ & IS Wain
Texel x	46.00kg	210ppk	Page Bros
Charollais x	47.00kg	210ppk	F & C Hutsby

Per HEAD			
Blue Texel	53.00kg	£120.00	SJ Timms
Charollais x	62.00kg	£115.00	H L Goode & Son
Charollais x	60.00kg	£110.00	HW & AJ Eadon & Son
Texel x	61.00kg	£110.00	Culworth Grounds Farm Partnership
Charollais x	70.00kg	£110.00	MFH Farming

Store Lambs: 620 Forward

An unexpected entry but meeting swift trade with faces all around the ring fit for sheep. Top today from Sapphire Alpacas selling to £82, with others from Caribbean Pete to £80. Best lambs £75-£80 with short keep harder bred lambs £70-£74. The dearest lambs sold being those mid-term sorts trading between £65 and £68, these would look a real price. Harder bred sorts £55-£60 with only the very small or spuriously bred under the £50 mark.

Auctioneer: Martin Lloyd

Cull Ewes:818 Forward

A mediocre number forward met the swiftest trade this winter with meated Ewes in best demand and aided by another new account attracted by numbers and the proper sorting of Ewes provided by Rosie. Rosie has been trained within the Abbatoirs so as she grades Ewes not with a farmers view but that of the end user. Shape and weight wanted as ever with only Fat, the continued commodity at a disadvantage. Top today £125 for a pair of Rouge Ewes from Anne Wilson who also sold Rouge Tups to £124. Robbie Tofield took £120 for Charolais Ewes and Rocky Poulson £119 for a pen of Charolais ewes followed by his neighbour Mr Greenfield. Texels to £110 from Steve Timms and pens of Suffolks topping at £99 for both Richard Lowe and Mr Minshull. Weight rewarded today with Mules a straight trade selling to a top of £84 from Ted Taylor and £80 from J P Willison. Mules generally £70 plus for meated with only fat discounted. Ewes looking a dear commodity dead now in comparison to other red meats. Goats today at £80 for 37kg. Goats always wanted on these Shores with buyers constantly requesting

Auctioneer: Tom Wrench

Rouge	£125	A K Wilson	Rouge	£110	A K Wilson
Rouge	£124	A K Wilson	Charollais x	£110	J & R Lowe
X Bred	£120	R Tofield	Charollais x	£110	I & T Greenfield
Charollais x	£119	Poulson & Co	Blue Texel	£110	S J Timms
Charollais x	£115	I & T Greenfield	Charollais x	£108	S & J Farming

F & J Clarke will kindly be donating a large Turkey at the evening Christmas Poultry Sale, Friday 20th December in Aid of Air Ambulance

Saturday 7th December - Smallholder Sale

A smaller entry for our last smallholders sale of the year, with some nice stock entered. Highlights included in the deadstock section, a set of lambs weigh scales to £410 and a Log Splitter to £280. The sheep section saw highs of £320 for Dutch Spotted Ram Lambs travelling all the way from Devon.

Next sale Saturday 15th February

Auctioneer: Martin Lloyd



**CONGRATULATIONS TO THE BELL HOTEL WINSLOW,
BUCKINGHAMSHIRE
FOR THE PURCHASE OF THE SUPREME CHAMPION BEAST SOLD FOR
400P/KG FROM F PAGE, YELVERTOFT**

Please look out for further details about our Beef Nights

The Bell Hotel's - Champion Beef Nights



- . Friday 24th January.
- . Friday 31st January.
- . Saturday 1st February.
- . Saturday 8th February.

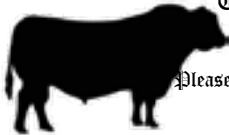
Come And Enjoy our Popular Beef Nights

ONLY £20

for a 3 course meal including Tea & Coffee

Taking Bookings Now

The Bell Hotel, Winslow, MK18 3AB



Please call 01296 714091 or email info@thebellhotel.co.uk
to make a booking.



Thanks to The Bell Hotel for kindly donating their prize money to
the Chairmans Charity



Rugby Farmers Mart Ltd



Evening Sale Of Christmas Poultry



Friday, 20th December 2019

Sale to commence at 6.00pm

Following the market carol service held at 5.30pm



TURKEYS • COCKERELS • GEESE • DUCKS



Dressed & Long Legged

(DEAD BIRDS ONLY)



Cash Only 5% Buyers Premium

Plucked and oven ready birds available of all weights and sizes.

Come and buy a fresh bird for Christmas day
and enjoy the auction atmosphere whilst grabbing a bargain!
To be sold by auction at the on-site Cattle Market all indoors and under one roof.
Poultry from local and national producers.

The Charolais Pavilion, Avenue M, Stoneleigh Park, Kenilworth, Warwickshire, CV8 2RG

Tel: 02476 697731

Email: admin@rugbyfarmersmart.com Web: www.rugbyfarmersmart.com



We are now taking entries for the
74th Midshires Produce Auction
On Tuesday 7th January 2020

at Lutterworth Rugby Club, Ashby Lane, Bitteswell, Leicestershire LE17 4LW

For any further information or an entry form please contact
Jenny on 01788 564749

TELEPHONE 01788 564 749

EMAIL dispersal.sales@howkinsandharrison.co.uk

7-11 Albert Street, Rugby, CV21 2RX



**FINISHING CATTLE?
GROWING CATTLE?
FEEDING SHEEP?**
**DO YOU WANT
HIGH PERFORMANCE
COST EFFECTIVE
FULLY ASSURED
AND
COMPLETE FEEDS?**

THEN CONTACT

BERRYSTOCK FEEDS

TEL: 01788 890320

E-MAIL: john@berryfieldsfarm.co.uk

www.berrystockfeeds.co.uk

BERRYFIELDS FARM
DAVENTRY
NN11 8NP

**Agricultural Services available including Muck Spreading,
Ploughing, Cultivation and much more!**

Call Will for more info: 07795632527

Always Happy To Help!

Sheep Grazing Wanted

Please contact Stuart Wise 07880742082 or Lesley 07564645504

**Call Tom on 07807 693858, 01926 814731
or email to tom.reeve@aol.co.uk**

Tom Reeve Contracting

Domestic, Agricultural and Commercial fencing.

Hedge coppicing, laying and planting.

Slot seeding for grass, arable, HLS and Game cover.

Slitting, Flail topping and much more.

For Sale

Beltex Shearling Ewe, possibly in lamb to Texel

Call Roy 07572003088

George Fell Services
Fencing & Hedge Trimming
Call 07769595856

For Sale

Good round bale haylage
Call Jane 07754488292

Wanted

Full-time worker required for sheep and cattle farm also some tractor work.
Good rate of pay for a reliable, experienced person.
Stratford Upon Avon area.
Call Steve on 07771560251

Hedge Cutting Contracting Service
Call Tom Lambert on 07824489716

For Sale

2 Pedigree Aberdeen Angus Stock Bulls
only selling as back on daughters
Call 07774723758

Wanted

Sheep & Cattle Grazing
Call 07760266701

Farm Insurance Specialists

Call 01865 844994

Visit www.county-insurance.co.uk



County
Insurance
Services

County Insurance Services, County House, Grove Court, Leamington Spa, Warwick, CV34 4JG. County Insurance Services is authorised and regulated by the Financial Conduct Authority, a FCA 50727.

JMT ENGINEERING REQUIRE CLASS 1 & 2 Lorry drivers.
Please ring Mark on 07970382951 or 01926 614345 for details"

T.A.R HIRE

- **FOR HIRE:**
- **10 & 14 TON REAR MUCK SPREADERS**
- **12 TON TRAILERS WITH SILAGE SIDES**
- **ROAD SWEEPER**
- **FLAT TRAILERS**
- **GRASS TOPPERS**
- **CONTRACT MUCK SPREADING SERVICES**

CONTACT:

DAVENTRY (ROB) - 07801791212

HINCKLEY (ALAN) - 07802951179



THE FARMING COMMUNITY NETWORK

The Farming Community Network is a voluntary network of volunteers, many of whom are members of the farming community.

We provide confidential pastoral and practical support for as long as needed to help people find a positive way forward through their problems.

FCN HELPLINE 03000 111 999

e-helpline;chris@fcn.org.uk

CHAPLAIN TO RUGBY LIVESTOCK MARKET –

Revd. Barbara Clutton, 01788 810372 or 07808 137550,

I'm around in the market most Mondays if needed, or just ring me if it's easier – I'm here to help with any farming or family issues.

Copies of "Fit For Farming" – men's health booklet are available at the market – please do take a copy.

<p>Hy-line pullets point of lay available now brown egg layers. Please contact Mark Martin on 07976 260 775 or 01788 565766</p>
--



WE COVER SMALL FARMS, LARGE FARMS AND EVERYTHING IN BETWEEN

**From sheep farmers to arable farmers.
Flower growers to poultry farmers.**

We're proud to insure over 70% of UK farms with our Farm Select insurance. But we want more farms to benefit from our great cover and local service. That's why we've introduced Farm Essentials insurance - designed to meet the needs of smaller farms.

As your local agency, we are close by and can provide expert advice and hands-on support when you need it.

Call **Coventry Office**
on **02476 444519**

NFU Mutual, 6 Eastwood Business Village,
Harry Weston Road, Binley Business Park,
Coventry, CV3 2UB



NFU Mutual
INSURANCE | PENSIONS | INVESTMENTS

Rugby Farmers Mart Ltd

Forthcoming Sales 2019

**Monday 16th December
Store Cattle Sale**

**Friday 20th December
Evening Christmas Poultry Sale**

Find us on Social Media



@rfm_ltd



Instagram

rugbyfarmersmartltd

Vendors who are wishing to sell stock please feel free to contact:

Tom Wrench - 07774 723758

Martin Lloyd - 07972 375351

Andrew Armstrong - 07902 316268

Steve Martin - 07960 085950

who will gladly make
A FREE ON FARM VISIT & VALUATION